



Hirst Court, 20 Gatliff Road
London SW1W

GARTON JONES.COM

Hirst Court, 20 Gatliff Road
London, SW1W

£795 Per Week

GARTON JONES.COM

8 Gatliff Road
Grosvenor
Waterside
Chelsea
London
SW1W 8DP

Lettings:
+44 (0) 20 7730 5007
gws@gartonjones.com
www.gartonjones.com

A bright and spacious ONE DOUBLE BEDROOM apartment to rent of approx. 624 sq.ft (58 sq.m). in Hirst Court, part of the popular Grosvenor Waterside development. This FURNISHED apartment has 2 Juliette style balconies overlooking the historic dock. There is an open plan reception room with floor to ceiling windows and a modern kitchen with integrated appliances, a guest cloakroom and an en-suite bathroom with a separate shower plus a separate guest cloak room. The apartment further benefits from wood flooring and good storage including built in wardrobes to the bedroom and a utility cupboard housing a washer dryer. There is comfort cooling. Residents have the use of 24-HOUR CONCIERGE, GYM & SPA. On-site Sainsbury's Local, coffee shop and private kids club. SLOANE SQUARE & VICTORIA station with Gatwick Express are within walking distance.

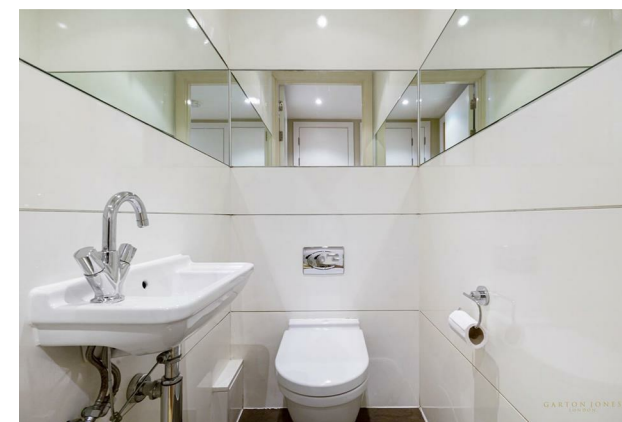
Available via Garton Jones' on-site office at Grosvenor Waterside (underneath Bramah House).

Please note the furniture may differ or not be included to that shown in current photos.

Westminster City Council (band E).

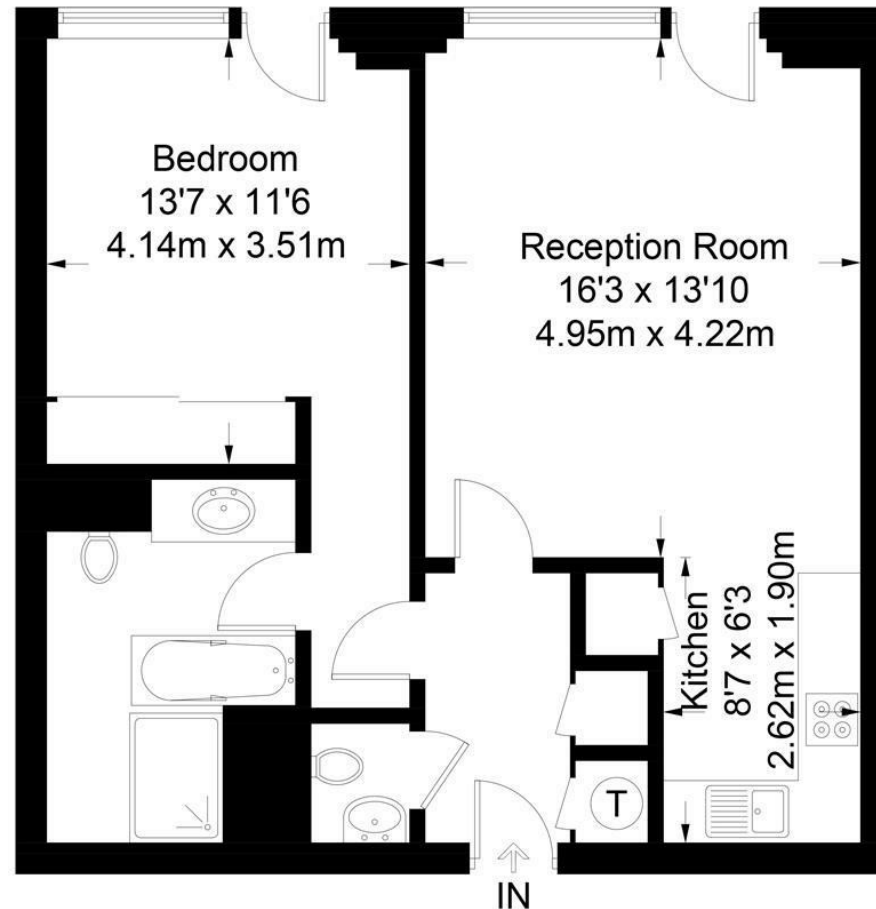
12 month minimum term. 5 week deposit required.

- 624 Sq.ft (58 Sq.m)
- 1 Double Bedroom
- Modern Bathroom
- Open Plan Reception Room
- Kitchen with Miele Integrated Appliances
- 24 Hour Concierge & Secure Underground Parking
- 2 Juliette Style Balconies
- Residents Leisure Suite with Gym & Spa Facilities
- On-Site Sainsbury's, Coffee Shop & Bakery, Purple Dragon Private Kids Club & Crèche
- Walking Distance to Sloane Square and Victoria Station



Hirst Court

Approximate Gross Internal Area = 624 sq ft / 58 sq m



Not to scale, for guidance only and must not be relied upon as a statement of fact.
All measurements and areas are approximate only and have been prepared in accordance with the current edition of the RICS Code of Measuring Practice.

